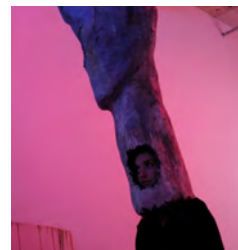


Ashley Wick

We are having a personal experience

2 Février - 17 Mars 2018
February 2 - March 17, 2018



Biographie

Ashley Wick explore les liens entre l'amour, la nostalgie, les phénomènes naturels, l'intuition et la peur. Dans ses animations et sculptures, elle donne vie en les anthropomorphisant, à des parties du corps désincarnées, des animaux et des insectes. Elle raconte ses histoires à travers le chant et le flux de conscience. Wick utilise un langage poétique et souvent métaphorique dans ses animations et sculptures, et à travers l'usage du langage rythmique, elle décrypte la transmission de mots et l'échange d'idées.

Elle a exposé à Philadelphie et New York dans des lieux tels que Fleisher Ollman Gallery, Marginal Utility, The Pennsylvania Academy of the Fine Arts Museum, NADA NY, SPRING/BREAK Art Show, Kunstraum LLC, et Bull and Ram Gallery. Wick a été récipiendaire du Fleisher Wind Challenge, du Linda Lee Alter Award pour la peinture et d'une subvention aux artistes émergents du John Anson Kittridge Fund.

Née en 1985 en Nebraska, vit et travaille à Philadelphia

Biography

Ashley Wick (Born 1987, Nebraska) explores connections between love, longing, natural phenomena, intuition and fear. In Wick's animations and sculptures, she brings life and anthropomorphizes disembodied body parts, animals, and insects to tell her story through song and stream of consciousness story telling. Wick applies a poetic and often metaphorical language in her painted animations and sculptures, by decoding transmissions of words and the exchange of ideas, through the usage of rhythmic language.

She has exhibited throughout Philadelphia and New York in venues such as Fleisher Ollman Gallery, Marginal Utility, The Pennsylvania Academy of the Fine Arts Museum, NADA NY, SPRING/BREAK Art Show, Kunstraum LLC, and Bull and Ram Gallery. Wick was a recipient of the Fleisher Wind Challenge, the Linda Lee Alter Award for painting, and an emerging artist grant from the John Anson Kittridge Fund.

Born in 1985 in Nebraska, she lives and works in Philadelphia

Expositions (sélection) / Exhibitions (selection)

- 2018 We are having a personal experience, Galerie Charlot, Paris, France
- 2017 I, YOU, WHO, ME, SPRING/BREAK, Auburn University, Auburn, AL
 Leon Sadler/ Kristy Luck/ Ashley Wick/ Adam Lovitz, Harpy Gallery, Rutherford, NJ
 I, YOU, WHO, ME, SPRING/BREAK Art Show, New York, NY
 Paper Work, Snyderman Works, Philadelphia, PA
- 2016 Person, Place, or Thing, Fleisher Ollman Gallery, Philadelphia, PA
 NADA NY, Marginal Utility Booth, New York, NY
- 2015 I LOST MY HEAD, Marginal Utility, Philadelphia, PA
 Richard Said, Fjord, Philadelphia, PA
 Things Are Risky, Baby, SPRING/BREAK Art Show, New York, NY
 Should I Stay or Should I Go, Gross McCleaf Gallery, Philadelphia, PA
- 2014 Heads and Hearts, Pennsylvania Academy of the Fine Arts Museum, Philadelphia, PA
- 2013 Fleisher Wind Challenge, Fleisher Art Memorial, Philadelphia, PA
 Get it While It's Cheap, Marginal Utility, Philadelphia, PA
 The Triumph of Human Painting, Brooklyn, NY

Prix / Awards

- 2014 John Anson Kittredge Educational Grant, John Anson Kittredge Fund, Cambridge, MA
- 2013 Fleisher Wind Challenge, Fleisher Art Memorial, Philadelphia, PA
 The Linda Lee Alter Award, Award for Excellence in Painting, Philadelphia, PA



Ashley Wick

We are having a personal experience

Peinture à l'huile animée en stop-motion, écran, papier maché /

Oil painted stop-motion animation, screen, papier maché

30 x 30 x 5 cm

2015

[VOIR LA VIDEO / WATCH THE VIDEO](#)





Ashley Wick

To get rid of the line of influence

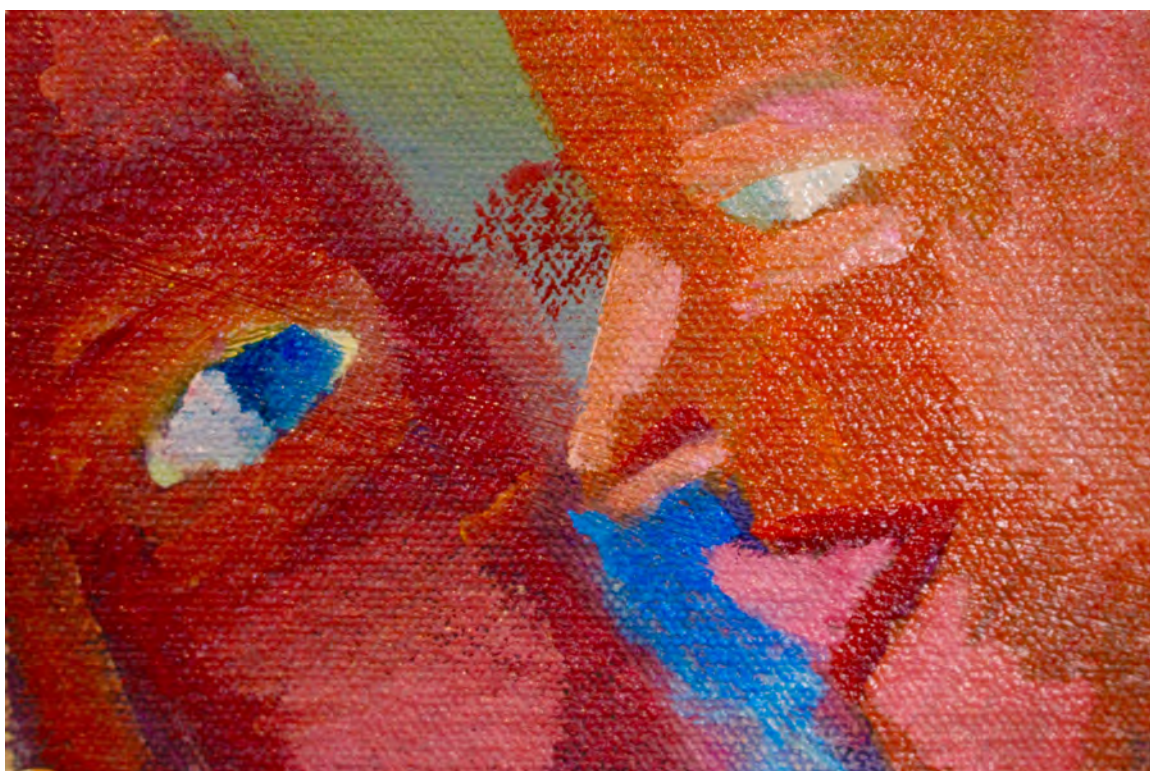
Peinture à l'huile animée en stop-motion, écran, papier maché /

Oil painted stop-motion animation, screen, papier maché

30 x 30 x 5 cm

2015

[VOIR LA VIDEO / WATCH THE VIDEO](#)



Ashley Wick

Things are risky, baby

Peinture à l'huile animée en stop-motion, écran, papier maché /

Oil painted stop-motion animation, screen, papier maché

30 x 30 x 5 cm

2015

[VOIR LA VIDEO / WATCH THE VIDEO](#)



«Il y a quelque chose dans l'animation stop motion qui attire immédiatement le spectateur, l'invite dans un espace intime qu'il peut partager avec l'artiste. C'est peut-être l'élément de la manipulation, la nécessité pour l'artiste d'être intimement impliqué dans les objets avec lesquels elle travaille, de leur insuffler de la vie.

L'œuvre d'Ashley Wick - des vidéos en stop motion créées au travers de peintures à l'huile repeintes encore et encore - travaille sur ce type particulier d'intimité que la technique du stop motion rend possible. Elle emmène son public dans un étrange voyage, explorant les rôles du soi et de l'autre à travers son regard ludique (et parfois effrayant)».

Samantha Mitchell, Title Magazine, 2016

«There is something about stop motion animation that immediately endears the viewer, invites them into a personal place that they can share with the artist. Perhaps it's the element of handling, the necessity that the artist be intimately involved with the objects they work with, breathing life into them.

The work of Ashley Wick – stop motion videos created with small-scale oil paintings, repainted over and over again – uses the peculiar kind of closeness stop motion provides to take her audience on a strange journey, investigating roles of self and other through her playful (and sometimes scary) lens.».

Samantha Mitchell, Title Magazine, 2016

